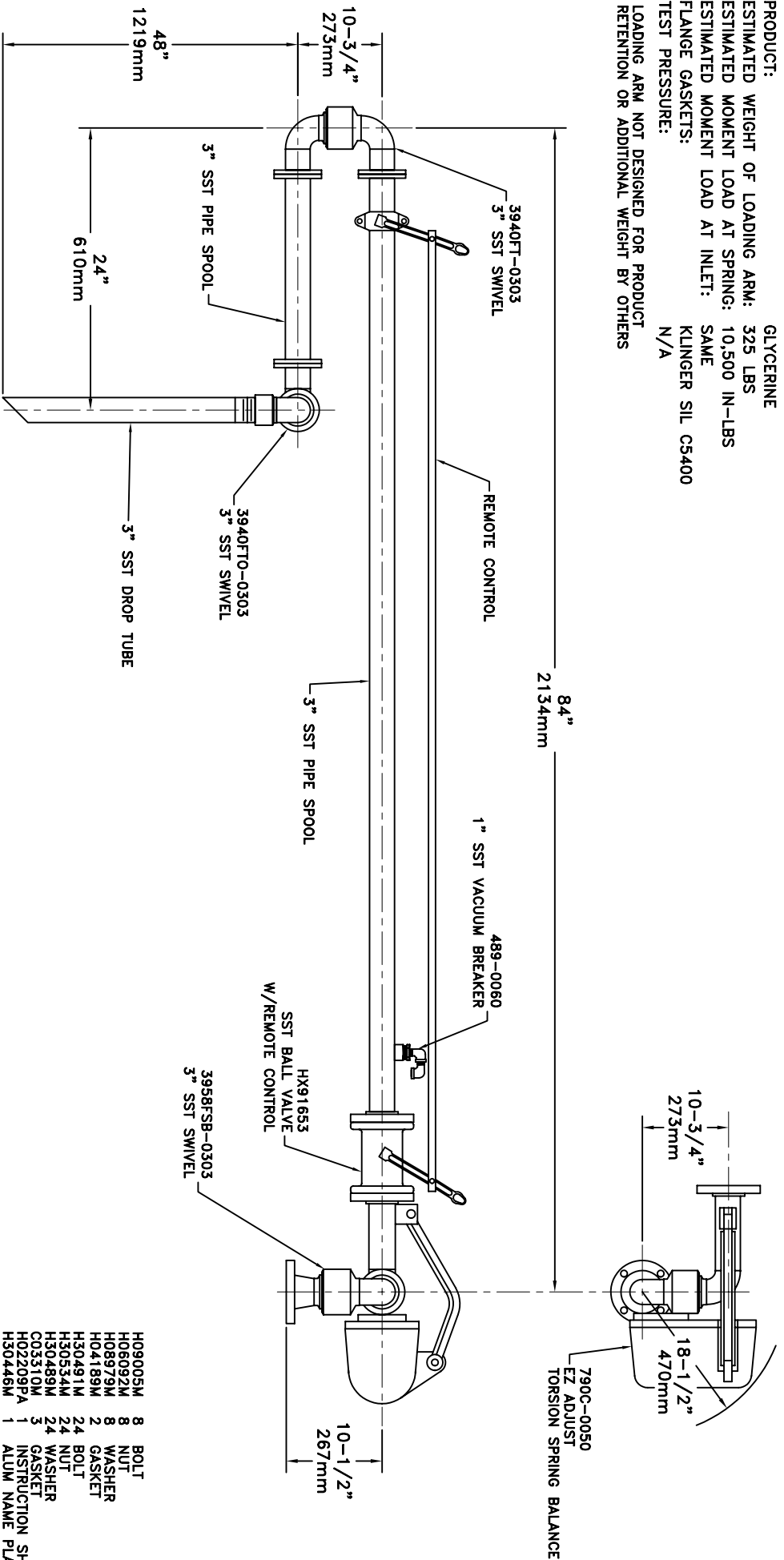


**MATERIALS OF CONSTRUCTION: 316L STAINLESS STEEL**  
**SWIVEL JOINT SEALS: TEFLON**

**PRODUCT:** GLYCERINE  
**ESTIMATED WEIGHT OF LOADING ARM:** 325 LBS  
**ESTIMATED MOMENT LOAD AT SPRING:** 10,500 IN-LBS  
**ESTIMATED MOMENT LOAD AT INLET:** SAME  
**FLANGE GASKETS:** KLINGER SIL CS400  
**TEST PRESSURE:** N/A  
**LOADING ARM NOT DESIGNED FOR PRODUCT RETENTION OR ADDITIONAL WEIGHT BY OTHERS**



OPERATION	A	B	C	D
WELD				
MACHINE				
ASSY & TEST				
ASSY ONLY				
TEST ONLY				
PAINT				
1. HIGHLIGHT RECD OPERATIONS PER ASSY.				
2. RECORD CLOCK NO. WHEN COMPLETE.				

<b>C32RF-G897</b>				<b>3"</b>
<b>OPW</b> Engineered Systems www.opw-es.com				
DRAWN BY: JLP	SCALE: NONE			
CHECKED BY:	DATE: 10/06/08			
QUOTE NO. 13954	DRAWING NO. SK13954A			