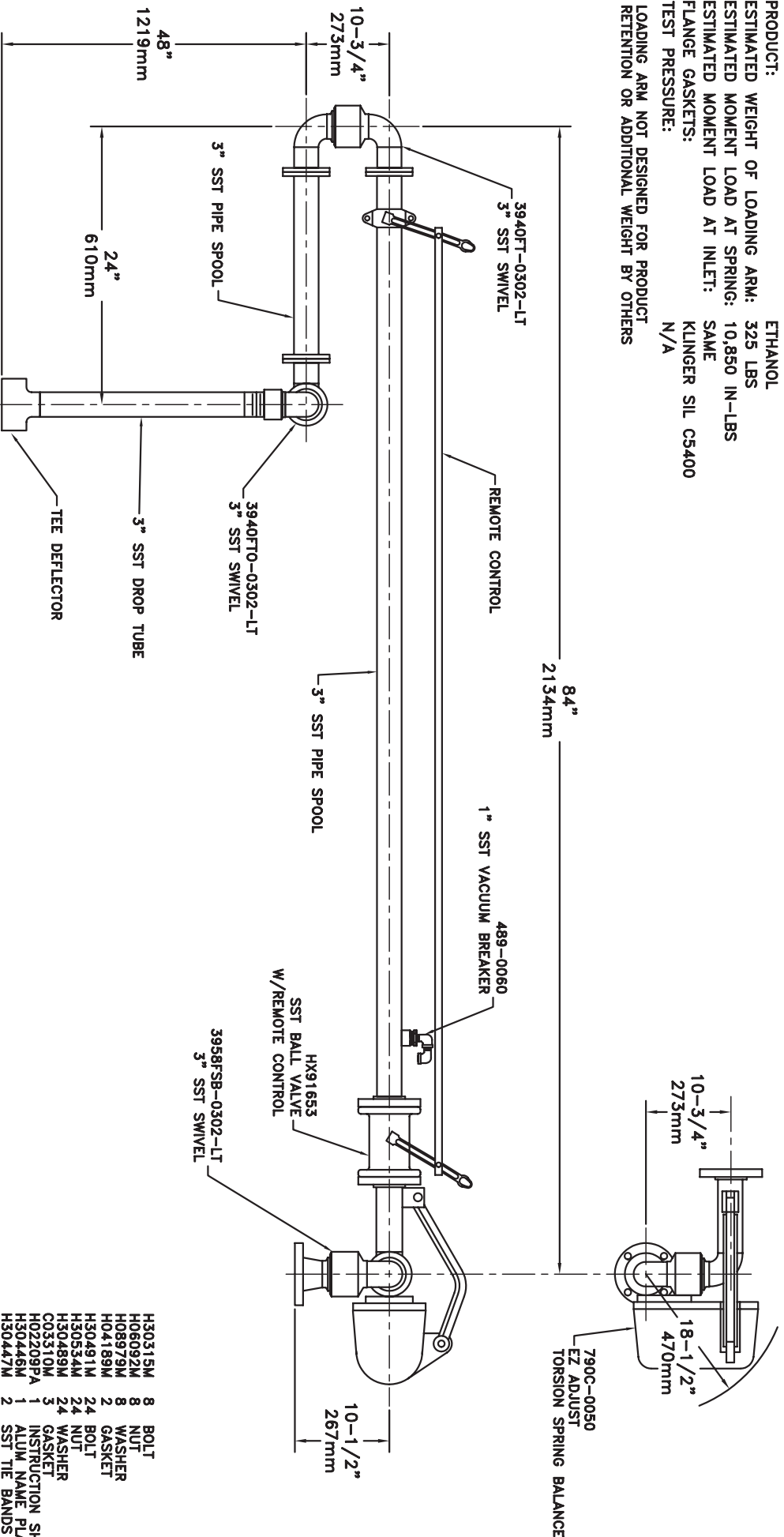


MATERIALS OF CONSTRUCTION: 316L STAINLESS STEEL
SWIVEL JOINT SEALS: VITON GFLT

PRODUCT: ETHANOL
ESTIMATED WEIGHT OF LOADING ARM: 325 LBS
ESTIMATED MOMENT LOAD AT SPRING: 10,850 IN-LBS
ESTIMATED MOMENT LOAD AT INLET: SAME
FLANGE GASKETS: KLINGER SIL CS400
TEST PRESSURE: N/A
LOADING ARM NOT DESIGNED FOR PRODUCT RETENTION OR ADDITIONAL WEIGHT BY OTHERS



OPERATION	A	B	C	D
WELD				
MACHINE				
ASSY & TEST				
ASSY ONLY				
TEST ONLY				
PAINT				

1. HIGH LIGHT RECD. OPERATIONS PER ASSY.
 2. RECORDED CLOCK NO. WHEN COMPLETE.

C32RF-G811 3"

OPW **Engineered Systems**
 www.opw-es.com

DRAWN BY: BUB SCALE: NONE
 CHECKED BY: DATE: 9/12/08
 QUOTE NO. 14035 DRAWING NO. SK14035B