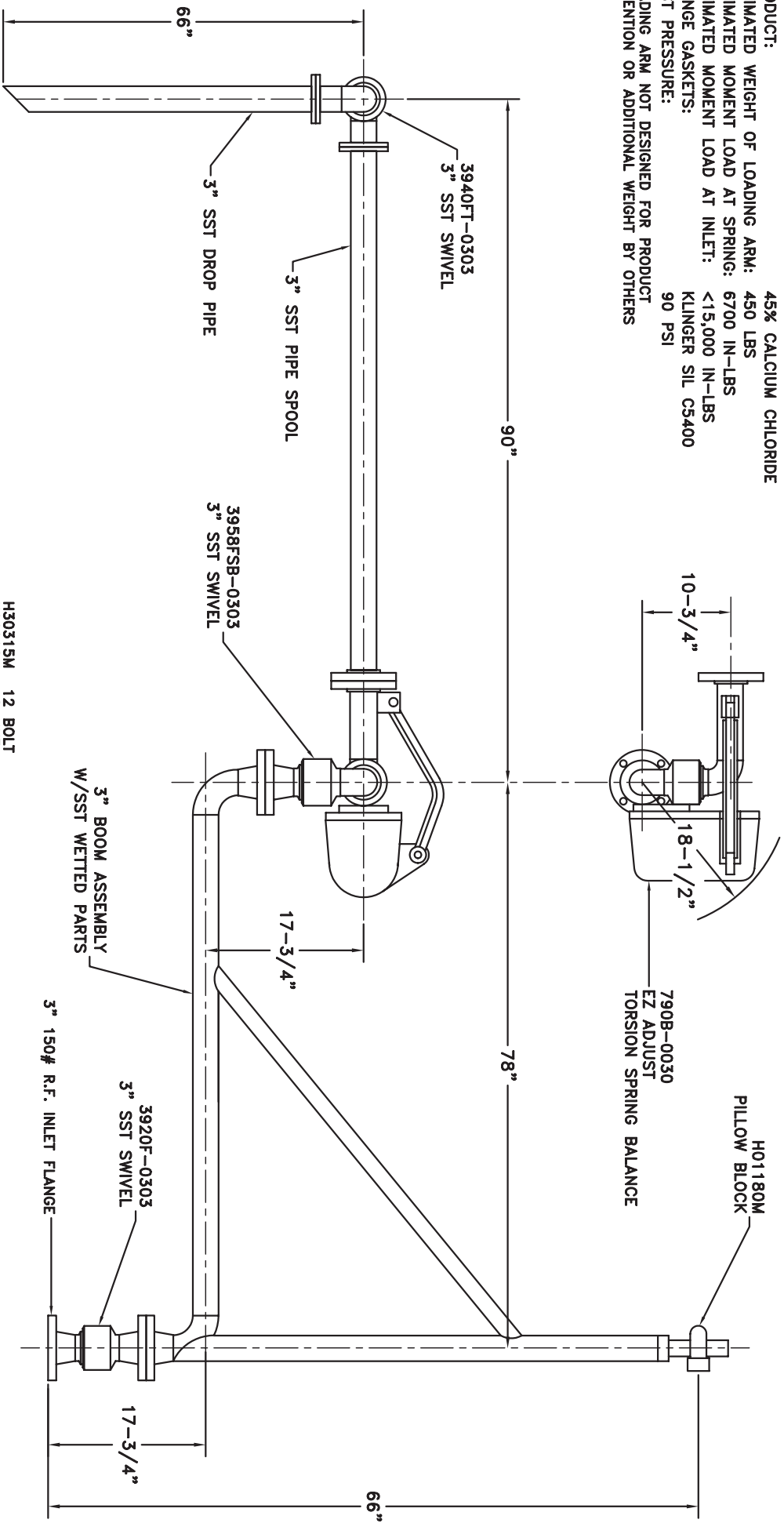


**MATERIALS OF CONSTRUCTION: 316L STAINLESS STEEL
SWIVEL JOINT SEALS: TFE ENCAPSULATED SILICONE**

PRODUCT: 45% CALCIUM CHLORIDE
ESTIMATED WEIGHT OF LOADING ARM: 450 LBS
ESTIMATED MOMENT LOAD AT SPRING: 6700 IN-LBS
ESTIMATED MOMENT LOAD AT INLET: <15,000 IN-LBS
FLANGE GASKETS: KLINGER SIL CS400
TEST PRESSURE: 90 PSI
LOADING ARM NOT DESIGNED FOR PRODUCT RETENTION OR ADDITIONAL WEIGHT BY OTHERS



- H30315M 12 BOLT
- H06092M 12 NUT
- H08979M 12 WASHER
- H04189M 3 GASKET
- H30491M 16 BOLT
- H30534M 16 NUT
- H30489M 16 WASHER
- C03310M 2 GASKET
- H02209PA 1 INSTRUCTION SHEET
- H30446M 1 ALUM NAME PLATE
- H30447M 2 SST TIE BANDS

OPERATION	A	B	C	D
WELD				
MACHINE				
ASSY & TEST				
ASSY ONLY				
TEST ONLY				
PAINT				

1. HIGHLIGHT RECD OPERATIONS PER ASSY.
 2. RECORD CLOCK NO. WHEN COMPLETE.

DRAWN BY: BUB	SCALE: NONE
CHECKED BY:	DATE: 8/29/08
QUOTE NO.	DRAWING NO.

3" B32F-G760 R.H.

OPW **Engineered Systems**
 www.opw-es.com

Distributed by:



3, Poruchik Nedelcho Bonchev Str., fl. 5, 1528 Sofia, Bulgaria
 tel: +359 2 973 27 67, e-mail: office@daisglobal.eu